



JUSTWARE | COURT

Software that empowers justice

Whether you are a judge, court clerk, office manager, bailiff, or someone else—if you work at court, you keep busy. You may make the decisions, or you may record the decisions made. You might create dockets, enter case information, collect fines, answer questions, compile reports, check people in, or perform other vital tasks. Whatever your exact role, you help ensure that justice is achieved in an efficient and timely manner.

At New Dawn Technologies, we recognize your responsibilities, having worked solely with justice organizations since our inception, and we have created a software solution specifically for you. JustWare | Court represents over a decade of software development and court knowledge. All functionality and design was directed by the input, feedback, and direct involvement of our court and justice customers from around the country.

Whether you're working on a criminal, civil, juvenile, family, or other type of case, JustWare will assist. JustWare organizes all of a case's information—including charges, pleas, case notes, witnesses, involved agencies, contact information, documents, court dates, and more—in one place. You can use it to compile statistics, generate documents, create reports, and control access.

Automation Tools

JustWare will simplify, or completely eliminate, many of your repetitive tasks. A few of JustWare's automation tools include:

- **Docket Management**—Schedule dockets, control the number of events inside them, and view or insert information related to those events. When scheduling court dates, JustWare will show you the next several available docket times based on the case criteria you entered.
- **Enter-it-Once Efficiency**—Track all name and case information for an unlimited number of individuals. Assign multiple roles to each name and party record without ever retyping contact or identifying data.
- **Financials**—Accept full and partial payments, allow payment plans, track fees, print receipts and vouchers, and more.
- **Business Rules**—Automate your tasks with pre-defined rules. For example, you can have notice letters and arrest warrants automatically print when you change a case status to “failed to appear.”
- **Automated Document Generation**—Generates warrants, opinions, orders, summons, writs, and other documents automatically using information stored in JustWare.

Partner with New Dawn

New Dawn creates software exclusively for the justice community, enabling us to focus on and meet the unique needs of your court. We quickly incorporate new technologies and adhere to and help develop national court CMS standards in order to ensure that our software is the best on the market.

Software, however, is only one piece of a successful implementation. Skilled project management, quality training, and continued service are all critical components and fundamental to how we create a long-lasting relationship with your court. Further, our high employee retention allows you to utilize the knowledge and experience gained over the years by our project and support teams.

New Dawn's notable 98 percent customer retention rate is due to both the power of our software and the quality of our service. New Dawn is distinguished for its friendly and customer-focused professional services, some of which include:

- **Customer-designed solutions, including the opportunity to submit enhancement requests**
- **Free version upgrades**
- **Regular releases**
- **Customer assistance via toll-free phone, email, or remote access**
- **Data conversions**
- **Data sharing between justice agencies**
- **Experienced project management**
- **Extensive & ongoing training**
- **Hosted solutions**

Intuitive Design

JustWare | Court capitalizes on features familiar to computer users today. Its intuitive design eases your transition to JustWare and minimizes training.

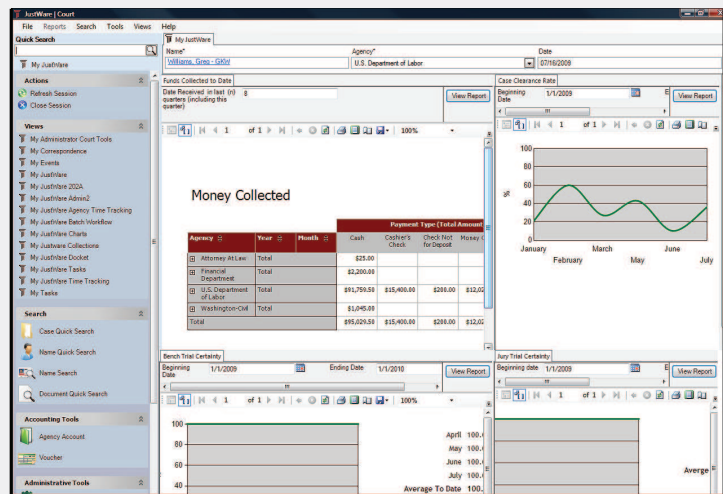
- **My JustWare Start Page**—View up-to-date information on start up with a fully configurable My JustWare page that can include calendars, graphs, charts, and reports, as you choose.
- **Integrated Reporting**—View customized reports that cover any and all information you desire (e.g. court calendars, case age, and case summaries). Reports and charts hyperlink to the names, cases, and events included in them.
- **Quick Search**—Access cases, names, documents, and events quickly. Search using whatever information you have, including partial names, ID numbers, addresses, and phone numbers.
- **Point-and-Click & Shortcuts**—Navigate entirely with a mouse or use keyboard shortcuts.

Innovative Technologies

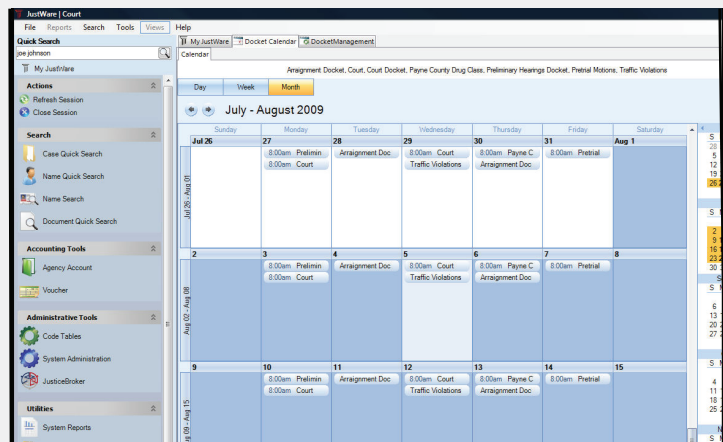
JustWare gives you all the advantages of an off-the-shelf program—including regular releases, a rapid response support team, and a nationwide user base of your peers—with all the flexibility and state-of-the-art technologies of a custom-developed application.

Here are some key terms to remember about JustWare:

- **Microsoft .NET**—incorporates Microsoft's latest technologies, such as ClickOnce deployment.
- **XML-based Client Environment**—allows you to configure your screens without our assistance.
- **N-Tiered**—easily incorporates new technologies.
- **Web Services**—transfers data reliably.
- **Service-Oriented Architecture**—structured to allow easy data exchange with other organizations.
- **Scalable Database**—sized to meet the needs of your agency, whether large or small.
- **NACM, COSCA & NCSC Standards**—adheres to national CMS standards. We also serve on the Joint Technology Committee that sets these standards.



Create graphical and navigable dashboards for your court and view them directly within JustWare.



Create automatically reoccurring dockets. Double-click a docket name to edit case details inside.

1.877.JUSTWARE

www.justware.com



Court



Prosecutor



Probation & Parole



Municipal Court



Pretrial Services



Public & Legal Defender

About New Dawn: New Dawn Technologies provides justice software, training, support, and services for thousands of justice professionals including courts, prosecutors, probation, parole, pretrial services, and public defenders. New Dawn's supplementary products combine with JustWare to further your goals: JusticeBroker for data sharing, and JusticeWebview for data viewing.

Contact us today to schedule an online demo!

 **New Dawn**
TECHNOLOGY SMART. COMMUNITY STRONG.